

The Newport



FRONT ELEVATION

SHOWN W/ THE FOLLOWING OPTIONS NOT INCLUDED IN BASE PRICE

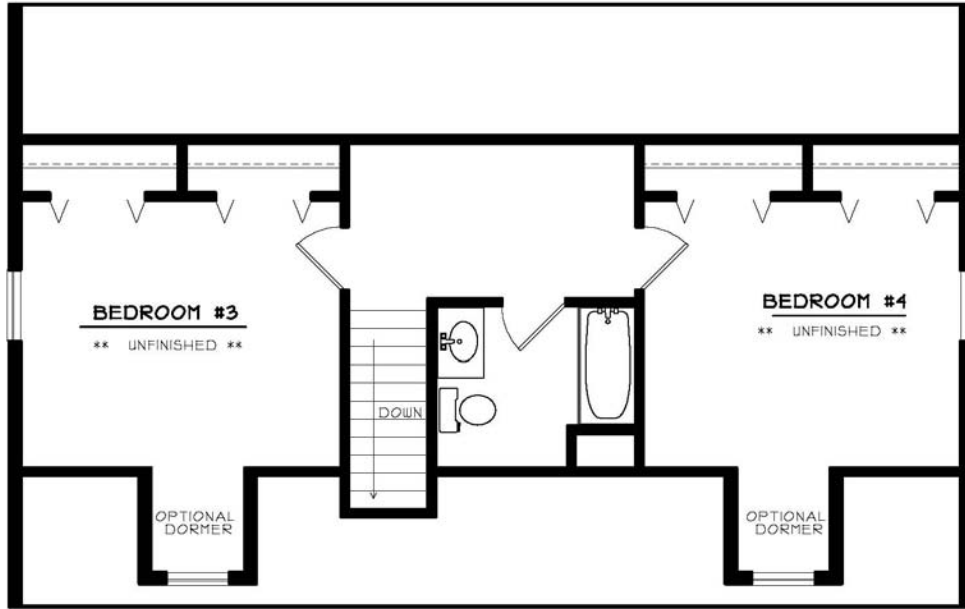
- ** 2852 WINDOW DORMERS - 4'-10"W.
- ** ADD'L COACH LIGHT

***With Finished Upstairs**
Bedrooms: 4
Baths: 2
Sq. Footage: 1,527

The Newport

This quaint home is an economical starter home, featuring 4 bedrooms and 2 full baths when finished. Or, leave it unfinished upstairs until the budget can afford to complete the project.

The Newport



SUGGESTED SECOND FLOOR

** 521 SQ. FT. (UNFINISHED)



FIRST FLOOR PLAN

1000 SQ. FT.