

The Tilghman



FRONT ELEVATION

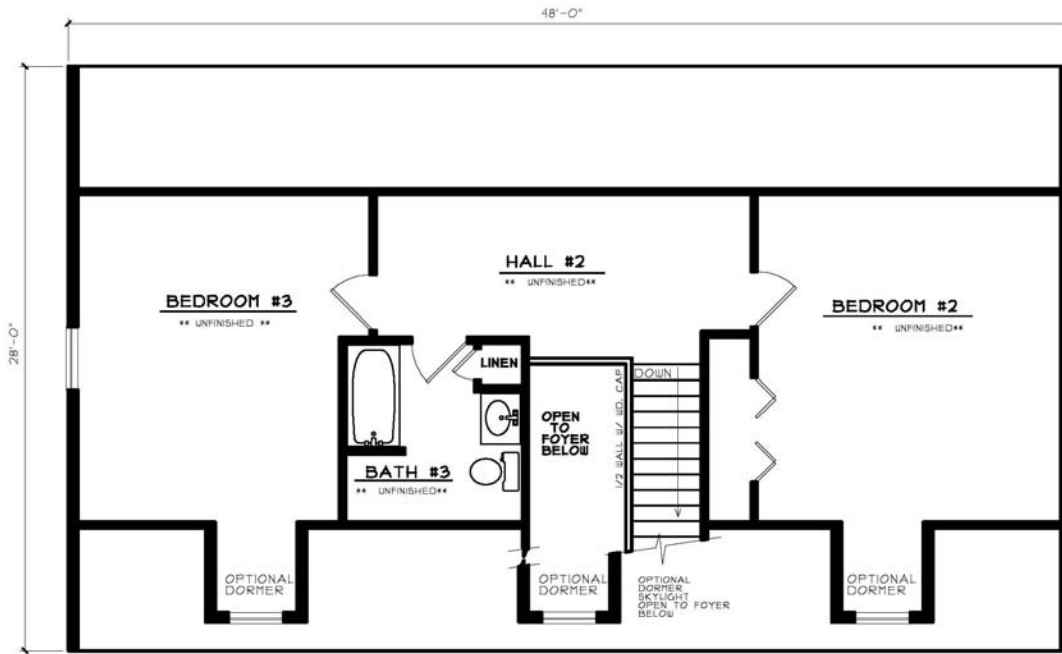
SHOWN W/ THE FOLLOWING OPTIONS NOT INCLUDED IN BASE PRICE
 ** 2852 WINDOW DORMERS - 4'-10"W.
 ** ADD'L COACH LIGHT
 ** WAGON WHEEL FRONT DOOR

***With Finished Upstairs**
Bedrooms: 3
Baths: 2 1/2
Sq. Footage: 2,050

The Tilghman

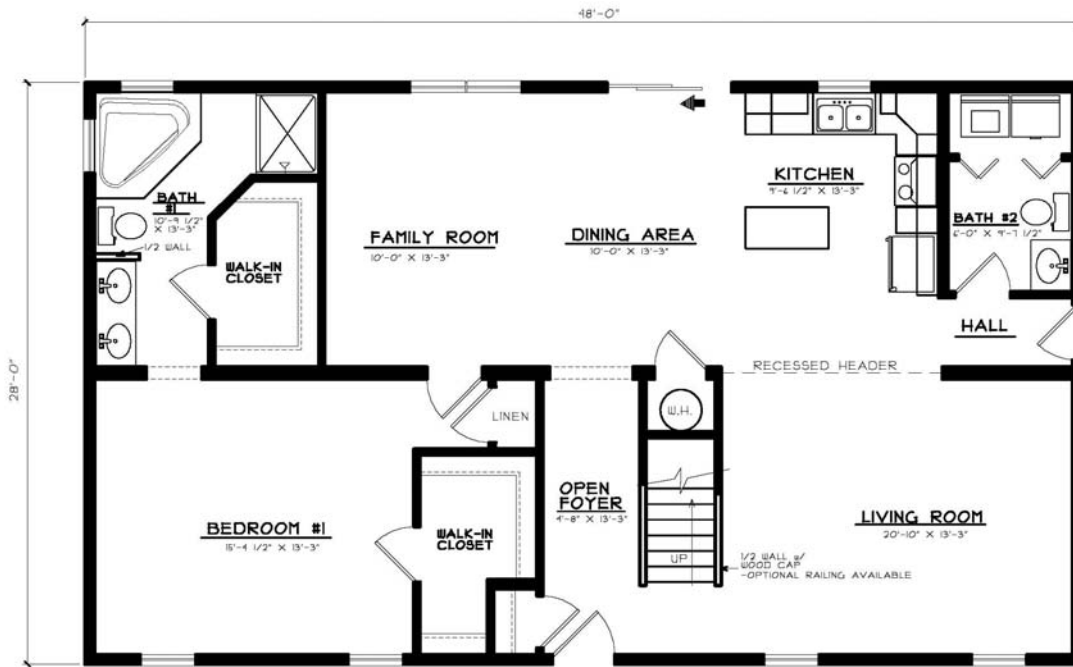
This Cape Cod features a separate foyer, open to above. A master suite downstairs features a corner tub and plenty of closet space. Upstairs, two bedrooms are joined by a large hall or sitting area.

The Tilghman



SUGGESTED SECOND FLOOR PLAN

106 SQ. FT.



FIRST FLOOR PLAN

1344 SQ. FT.