

The Wellbourne



FRONT ELEVATION

SHOWN W/ THE FOLLOWING OPTIONS NOT INCLUDED IN BASE PRICE

- ** WINDOW WRAP ON ALL FRONT WINDOWS
- ** SCALLOPED SIDING IN DORMER GABLES
- ** 9 LITE EXTERIOR FRONT DOOR ILO STD 6-PANEL DOOR
- ** PORCH SITE BUILT BY OTHERS

***With Finished Upstairs**

Bedrooms: 3

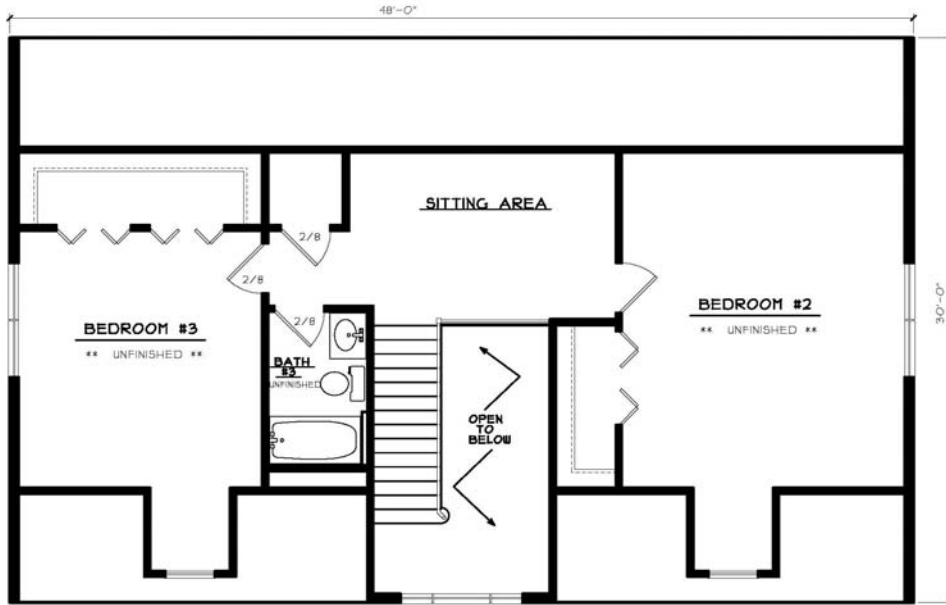
Baths: 2 1/2

Sq. Footage: 2,240

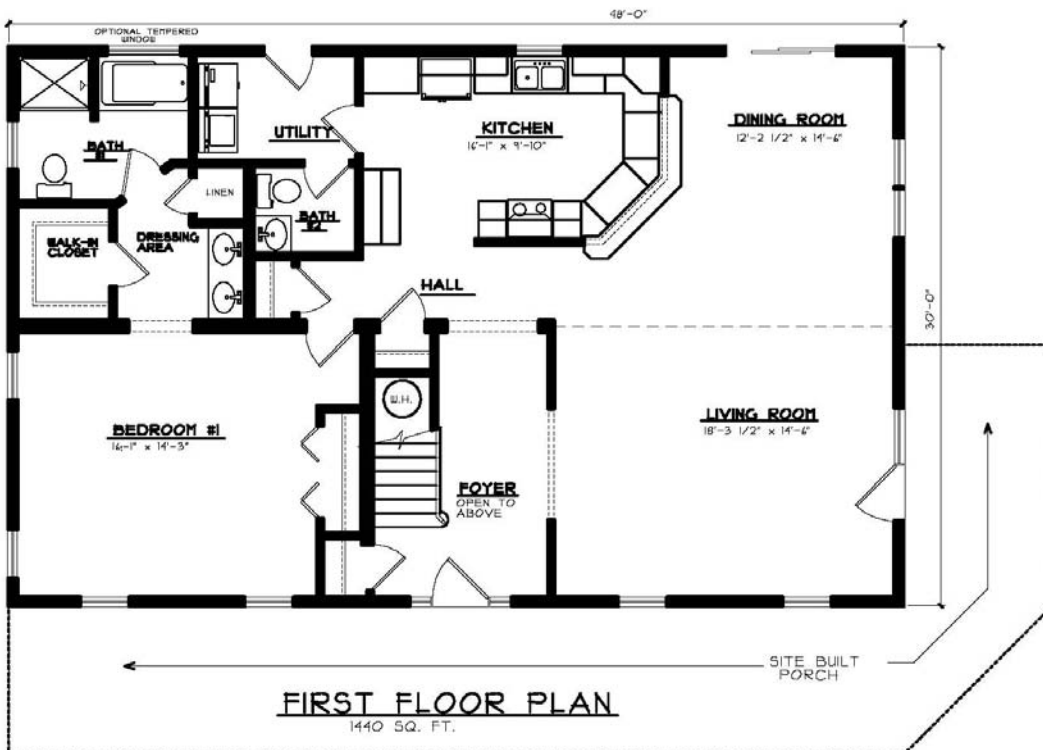
The Wellbourne

Loaded with extras, the 30' wide Wellbourne features an all oak stairway, handrail, and spindles open to above. The dormers shown on the elevation come standard with this model (minus the stated optional exterior treatments). These dormers give it an elegant look. The kitchen includes loads of storage and counter space.

The Wellbourne



SUGGESTED SECOND FLOOR PLAN
800 SQ. FT. (UNFINISHED)



FIRST FLOOR PLAN
1440 SQ. FT.