

# The Duplex I



UNIT #1

UNIT #2

## FRONT ELEVATION

SHOWN W/ THE FOLLOWING OPTIONS NOT INCLUDED IN BASE PRICE

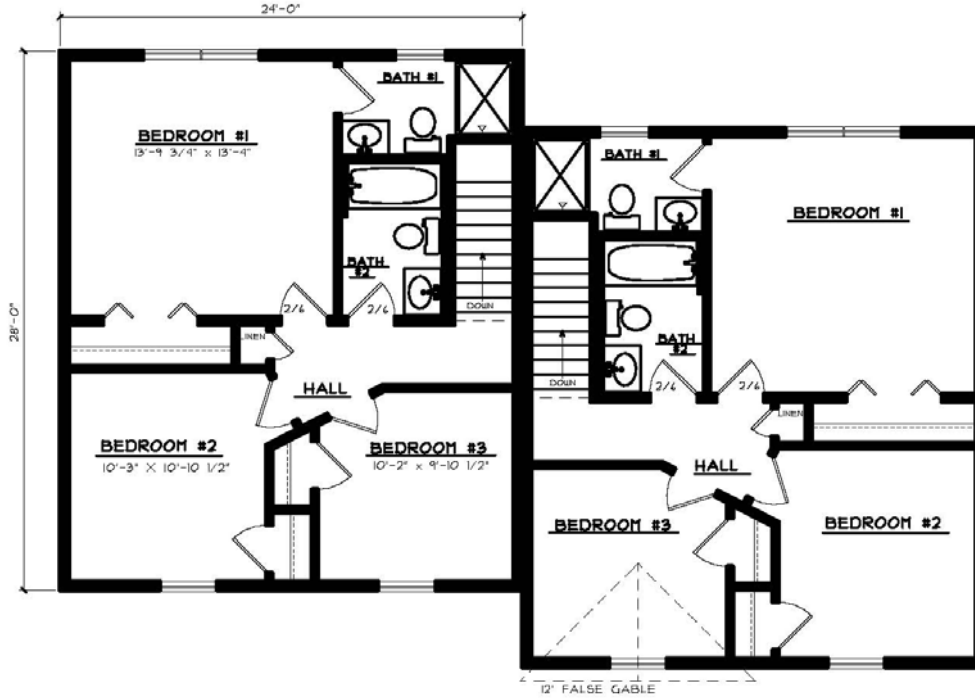
- \*\* DEC. CROSSHEADS ABOVE FRONT WINDOWS
- \*\* DEC. CROSSHEADS W/ PILASTERS AT FRONT DOORS
- \*\* 12' FALSE GABLE ON ONE (1) UNIT
- \*\* SCALLOPED SIDING IN FALSE GABLE
- \*\* PORTICO AT FRONT STEP SITE BUILT BY OTHERS
- \*\* ADD'L. COACH LIGHT AT FRONT DOORS

**Bedrooms: 3**  
**Baths: 2 1/2**  
**Sq. Footage: 1,344**  
**\*\*\* per unit \*\*\***

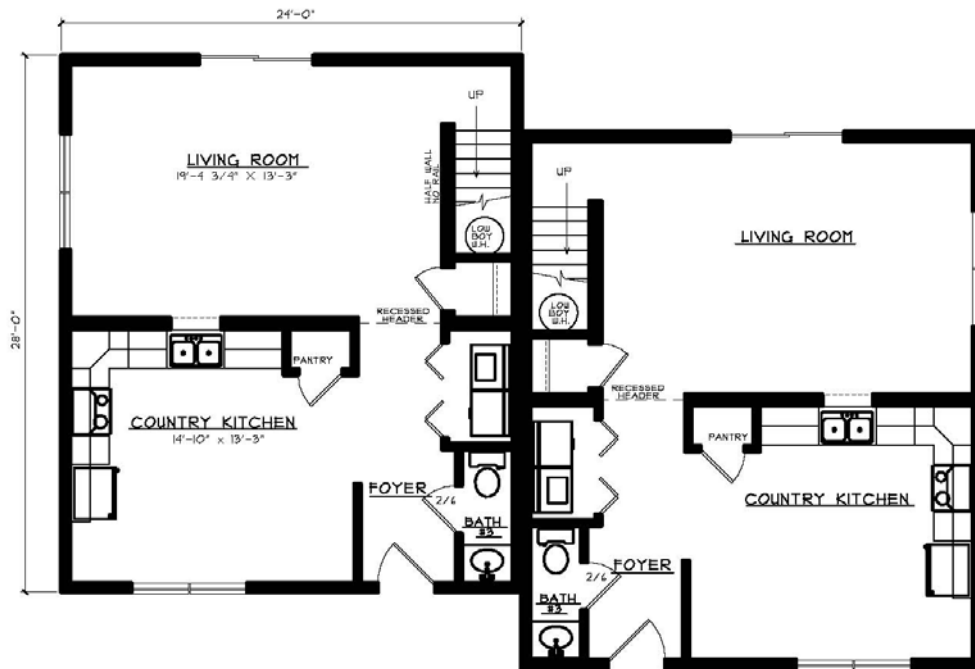
### The Duplex I

This economical duplex features a Country Kitchen and a large Living Room. Offset facades break up a large roof line adding individuality to the units.

# The Duplex I



SECOND FLOOR PLAN  
612 SQ. FT. (EACH UNIT)



FIRST FLOOR PLAN  
612 SQ. FT. (EACH UNIT)