

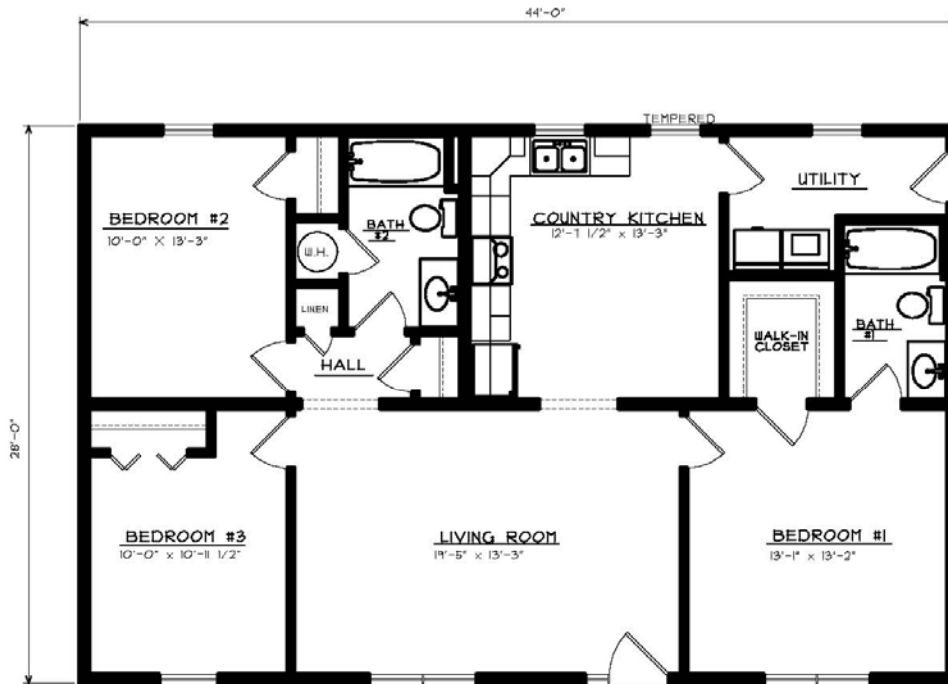
The Cordova

Bedrooms: 3
 Baths: 2
 Sq. Footage: 1,232



FRONT ELEVATION

SHOWN W/ THE FOLLOWING OPTIONS NOT INCLUDED IN BASE PRICE:
 ** 3/0 FRONT DOOR W/ SIDELITE AND WAGON WHEEL GLASS
 ** 18' (1/12 PITCH) FALSE GABLE DORMER



FLOOR PLAN

1232 SQ. FT. - LIVING

The Cordova

This split bedroom home features a large living room and master bedroom. The side rear entrance would be ideal with an attached garage.