

The Canterbury

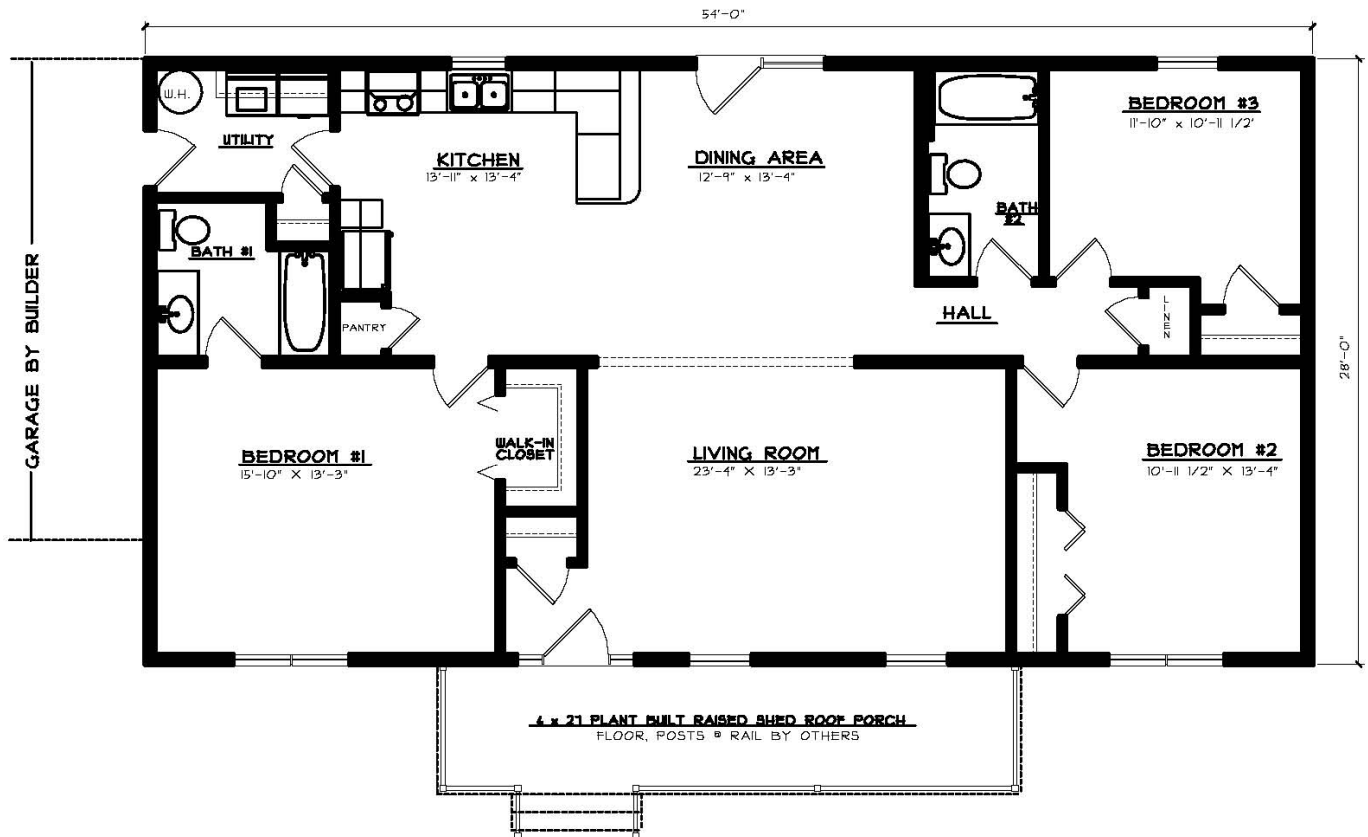
Bedrooms: 3
 Baths: 2
 Sq. Footage: 1,512



FRONT ELEVATION

SHOWN w/ THE FOLLOWING OPTIONS NOT INCLUDED IN BASE PRICE:

- ** PLANT BUILT RAISED SHED ROOF PORCH - FLOOR, RAILS, & POSTS BY OTHERS
- ** ADD'L. COACH LIGHT AT FRONT DOOR
- ** GARAGE SITE BUILT BY OTHERS
- ** FRONT DOOR w/ (2) SIDELITES



FLOOR PLAN

1512 SQ. FT. - LIVING

The Canterbury

This spacious rancher features a large living room and an open kitchen. The optional raised “saddle” roof adds a quaint front porch.