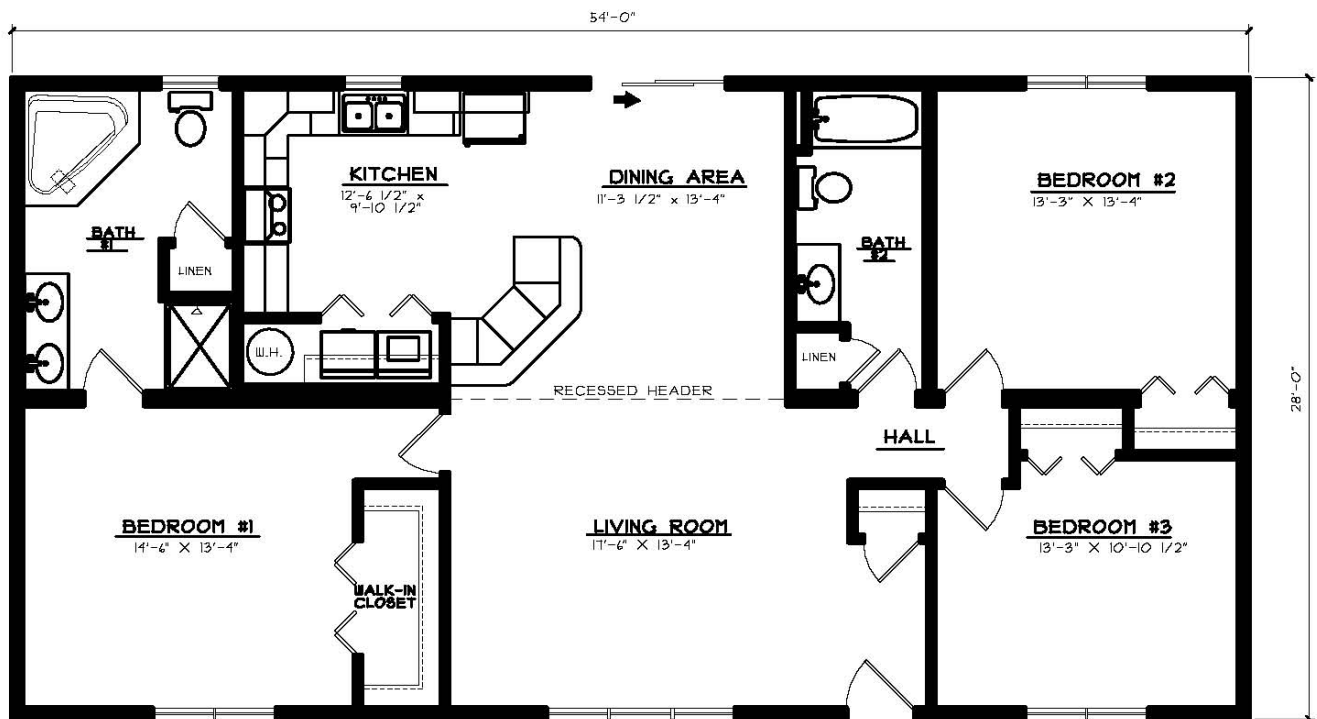


# The Hartly

Bedrooms: 3  
 Baths: 2  
 Sq. Footage: 1,512



FRONT ELEVATION



FLOOR PLAN  
 1512 SQ. FT.

## The Hartly

This “split-bedroom” rancher features a master bath corner soaking tub as well as an open living area with an attractive bar area. This house is great for entertaining.