

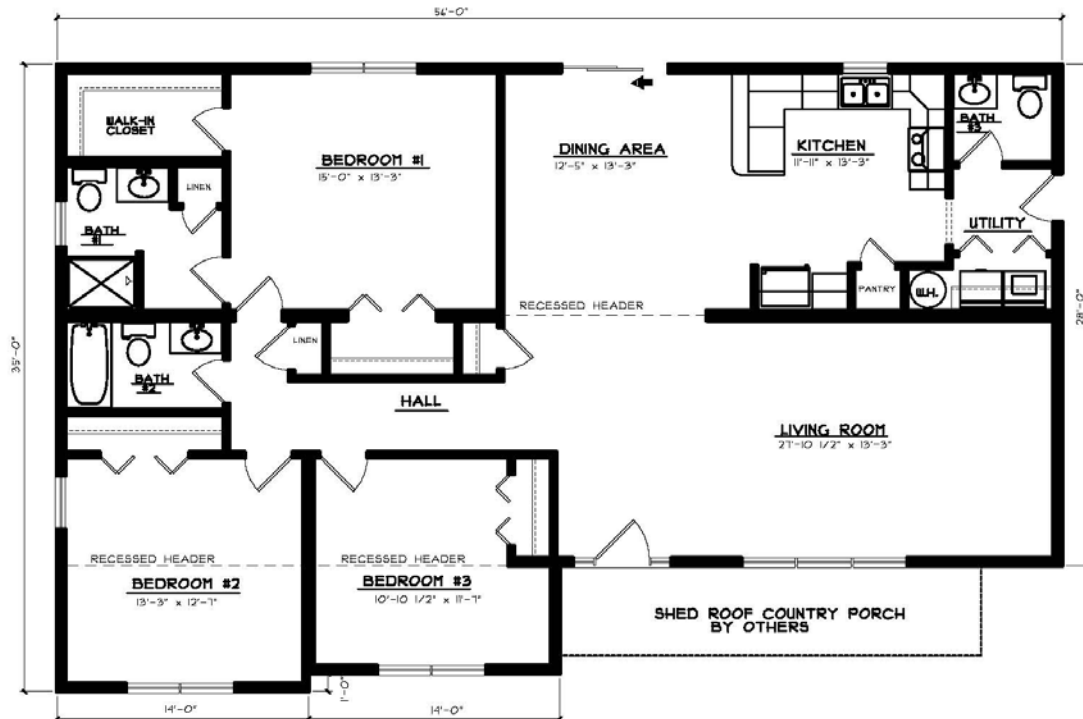
The El Dorado

Bedrooms: 3
 Baths: 2 1/2
 Sq. Footage: 1,719



FRONT ELEVATION

SHOWN W/ THE FOLLOWING OPTIONS NOT INCLUDED IN BASE PRICE
 ** SITE BUILT FRONT PORCH BY OTHERS
 ** ROUND DEC. VENTS (2)
 ** 1/12 ROOF PITCH
 ** FRONT DOOR W/ (2) SIDELITES



FLOOR PLAN
 1719 SQ. FT. - LIVING

The El Dorado

This rancher, with double bumpouts, has excellent curb appeal with its turned gable design. This home also includes a large living room and plenty of closet space.