

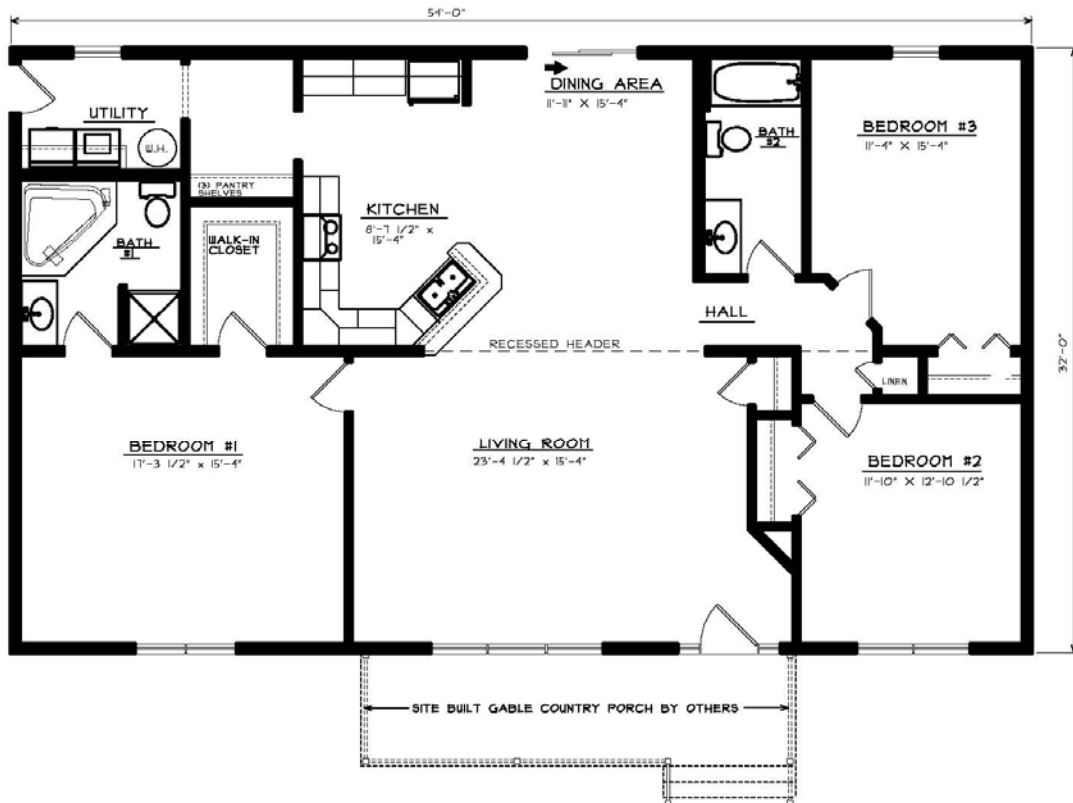
# The Ridgely

Bedrooms: 3  
 Baths: 2  
 Sq. Footage: 1,728



FRONT ELEVATION

SHOWN W/ THE FOLLOWING OPTIONS NOT INCLUDED IN BASE PRICE  
 \*\* SITE BUILT FRONT PORCH BY OTHERS  
 \*\* FRONT DOOR W/ (2) SIDELITES



FLOOR PLAN

1128 SQ. FT. - LIVING

## The Ridgely

This 32' wide home features a split-bedroom design and a very open living area. Shown with an optional turned gable front porch.