

The Selbyville

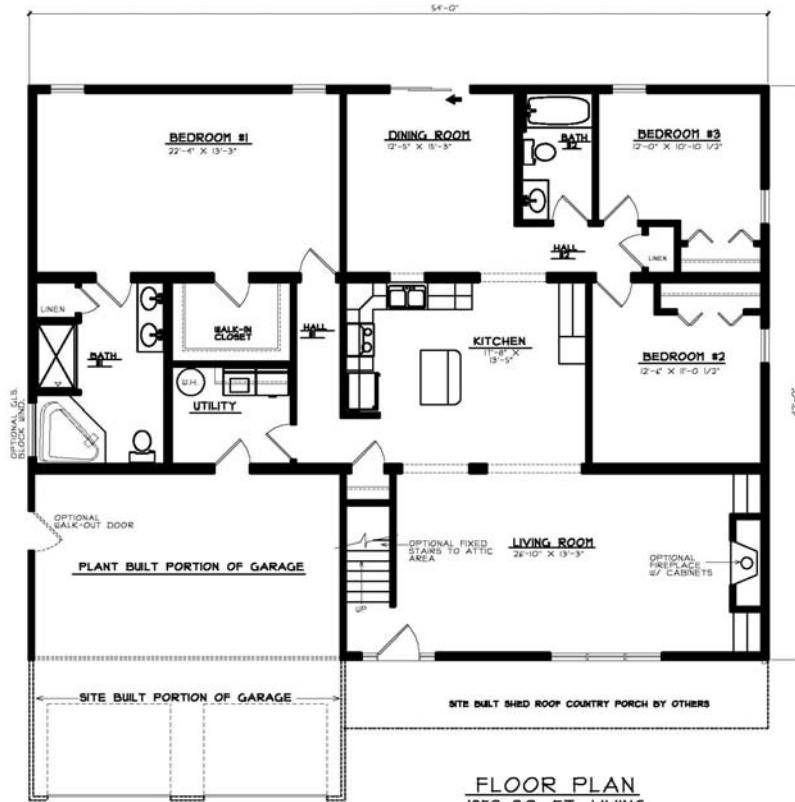
Bedrooms: 3
 Baths: 2
 Sq. Footage: 1,952



FRONT ELEVATION

SHOWN W/ THE FOLLOWING OPTIONS NOT INCLUDED IN BASE PRICE

- ** DORMERS W/ CIRCLE TOP WINDOWS
- ** SITE BUILT GARAGE EXTENSION W/ ROUND DEC. VENT
- ** SITE BUILT COUNTRY PORCH
- ** FRONT DOOR W/ (2) SIDELITES



FLOOR PLAN
 1952 SQ. FT. LIVING

The Selbyville

This extra wide home features a large master suite, large living room, and a separate dining room. The optional fixed stairs to the attic provide extra storage.