

# The Kingston



## FRONT ELEVATION

SHOWN W/ THE FOLLOWING OPTIONS NOT INCLUDED IN BASE PRICE:

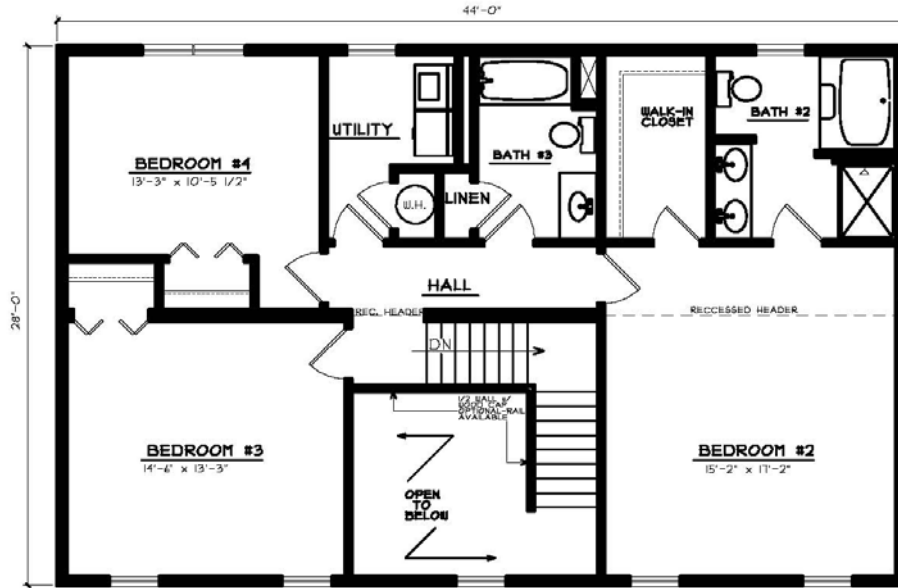
- \*\* 12' FALSE GABLE (12/12 ROOF PITCH)
- \*\* DEC. GABLE VENTS (2)
- \*\* FRONT PORCH SITE BUILT BY BUILDER
- \*\* ADD'L. COACH LIGHT AT FRONT DOOR

**Bedrooms: 4**  
**Baths: 3 1/2**  
**Sq. Footage: 2,903**

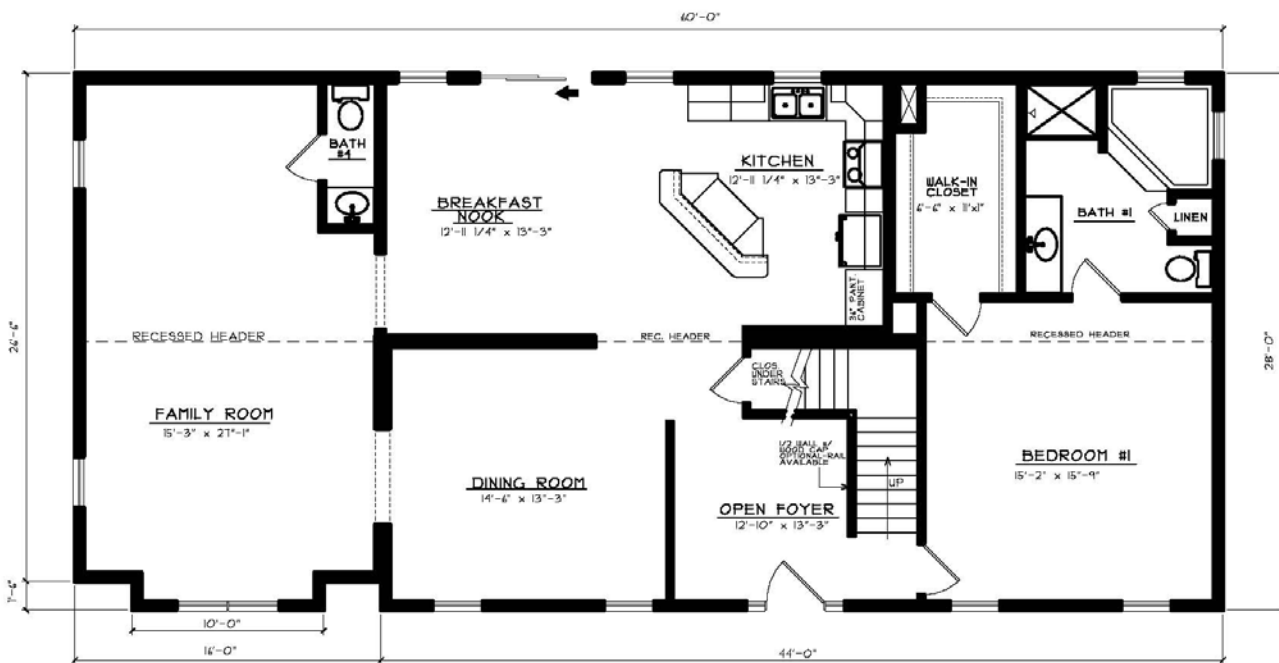
## The Kingston

This terrific looking two-story home has everything you could want. It has a large Master Suite downstairs, formal Dining Room, and spacious Family Room. Upstairs, it has 3 more Bedrooms, one with a private Bath with a garden tub.

# The Kingston



SECOND FLOOR PLAN  
1232 SQ. FT.



FIRST FLOOR PLAN  
1671 SQ. FT.